



Project H.O.M.E.'s

Dwelling Place

APRIL 2006

NONE OF US ARE HOME UNTIL ALL OF US ARE HOME

PROJECT H.O.M.E. (Housing, Opportunities for Employment, Medical Care, Education)

empowers people to break the cycle of homelessness, address the structural causes of poverty, and attain their fullest potential as members of society. Our work is rooted in our conviction of the dignity of each person and our belief that all are entitled to decent, affordable housing and quality education, employment, and health care. We achieve this through street outreach; supportive housing; comprehensive services; community development; employment training and opportunities; adult and youth education; health care; environmental enhancement; and political advocacy.

RESIDENCES

1515 and 1523 Fairmount Avenue
Diamond Street Residences, 2826-29 Diamond St.
In Community, 1229 Chestnut St.
Kairos House, 1440 N. Broad St.
Kate's Place, 1929 Sansom St.
Rowan I, 2729-A W. Diamond St.
Rowan II, 1901 N. Judson St.
St. Columba, 4133 Chestnut St.
St. Elizabeth's Recovery, 1850 N. Croskey St.
Women of Change, 21st & Arch Sts.

SUPPORT SERVICES & PROGRAMS

Adult Education, Employment & Arts
Community Development Corporation
Education and Advocacy
Honickman Learning Center and
Comcast Technology Labs
Outreach Coordination Center
Volunteer Program

BUSINESSES

Our Daily Threads Thrift Shop, 215-232-6322
Back Home Café and Catering, 215-232-6311

ADMINISTRATION

215-232-7272

HOMELESS OUTREACH HOTLINE

215-232-1984

HUMAN RESOURCES HOTLINE

215-232-7219 x5200

www.projecthome.org

MAKING OUR WAY HOME

A HOME. FEW THINGS in life are as elemental or essential. Home is the basis of our economic life, our relational life, and our vocation. We need home to survive. We need home to flourish.

As our name implies, the building of home is at the heart of Project H.O.M.E.'s mission. Since our beginning in 1989, we have developed almost 500 homes. These range from safe havens for those coming in off the streets to supportive housing for formerly homeless and low-income men, women, and families to home-ownership dwellings for working families. Along with the bricks and mortar, we provided supportive services and a

sense of community, so that our residents can not only feel safe in a place of their own, but also achieve their fullest potential.

As proud as we are of these efforts, we know they do not nearly meet the overwhelming need. The city of Philadelphia suffers from a severe crisis in affordable housing. A January 4 cover story by Gwen Shaffer in *Philadelphia Weekly* portrayed the "tale of two cities" that is Philadelphia. While high-end condominiums and townhouses go up and the city celebrates its phenomenal real estate boom, our shelters are overflowing, and tens of thousands of low- and moderate-income Philadelphians struggle to find a decent place to live at a manageable cost. Many are living in substandard and dangerous dwellings, many are on the brink of homelessness. A 2003 study by the University of Pennsylvania calculated that 60,000 units of affordable housing are needed to stem this crisis.

This is an unacceptable situation. It cries out for a serious and sustained effort to build effective solutions. It requires cre-

ativity, and a broad-based community working together.

THE CHALLENGE IS daunting, but not impossible. Recent history tells us that solutions are possible. Last year, the Philadelphia Housing Trust Fund, which Project H.O.M.E. helped advocate for, along with allies such as the Philadelphia Affordable Housing Coalition and Philadelphia Association of Community Development Corporations, was signed into law. It provides \$14 million in new revenues to develop low- and moderate-income homes. Several years ago, such an idea was politically infeasible.

But through long, persistent grassroots organizing, the Trust Fund was birthed into reality by a committed coalition inspired by the vision of homes for all.

New, creative, and realistic policies are being put forth. On March 16, at a forum sponsored by Project H.O.M.E., former City Housing Director John Kromer laid out a compelling case that the city's policy of tax abatements, which defer property taxes for ten years on new residential development or renovation, can be used to foster new affordable housing. Kromer argued that as the 10-year abatement on a property ends, a portion of the city's share of the increased tax revenue can be put toward developing affordable homes for low- and moderate-income Philadelphians.

Another concrete proposal is also in the wings. The Philadelphia Affordable Housing Coalition, ACORN, and a growing coalition of groups including Project H.O.M.E. are launching a campaign for



With creativity and commitment, we can respond to Philadelphia's affordable housing crisis.

(continued on page 2)

MAKING OUR WAY HOME *(continued from page 1)*

inclusionary zoning. This strategy would require luxury housing developers to pay their fair share by contributing to an affordable housing fund or including affordable units in their developments and ensuring living wage jobs in their buildings. Inclusionary zoning has succeeded in other cities and, with the right political will, can work in Philadelphia. (This will be the topic of our next public forum – see page 8.)

That's not all. Over the past three months, Project H.O.M.E. has taken leadership in helping to form the FAIR Deal Coalition, a broad-based, multi-county coalition that is advocating for a share of profits from the upcoming slots parlors be used for economic development and housing in low-income communities (see page 5). These new parlors will bring hundreds of millions of dollars annually into the region – a portion of which can and should help to ease the affordable housing crisis.

Meanwhile, with another critical election year on us, Project H.O.M.E. is taking leadership in *Election 2006: Vote*

For Homes!, a statewide effort to raise issues of housing, jobs, and services in the gubernatorial and Senate races. (The next issue of *Dwelling Place* will feature more details on *Vote For Homes!*) The state role in affordable housing is critical – as evidenced by the incredible efforts of the Pennsylvania Housing Finance Agency, which has supported our work and the work of other nonprofits throughout the state. The federal role is likewise critical, but more problematic: Diminishing federal resources are making local efforts to promote affordable housing all the more difficult. *Vote for Homes!* provides an important opportunity to debate the role of the public sector in helping to ensure homes for all citizens.

SOLUTIONS ARE POSSIBLE. With a common vision, a lot of hard work, and the right political will, we can make miracles happen. We can create a city where everyone has a chance to flourish. The road home lies ahead of us.

LOOKING BACK: THE BEAUTY OF LIVING “IN COMMUNITY”

In 1991, PROJECT H.O.M.E. had only three years under our belt. At that time we offered only entry-level shelter and transitional housing for homeless men. That year, the City of Philadelphia's Office of Mental Health approached Project H.O.M.E. with a unique proposal. OMH wanted to try an experimental new program for persons with mental health disabilities. The experiment was “supported independent living,” a newly emerging idea in the mental health field. OMH offered to provide the funding if Project H.O.M.E. would develop and manage the program. Together, we envisioned a community-based housing program for formerly homeless people with mental illness who needed some level of support, but who wanted to try and live independently.

The result was In Community, a program launched by Project H.O.M.E. in February, 1992. We started by renting 12 efficiency apartments in the Adelphia House at 13th and Chestnut Streets in Center City Philadelphia. Joe Bradley, In Community's Program Coordinator during its early years, recalls visiting residential programs around the city, interviewing potential candidates for In Community.

In Community was our first permanent housing, and our first housing for women as well as men. It grew quickly, from 12 units to 40, thanks to Shelter Plus Care funding from the U.S. Department of Housing and Urban Development.

In 1998, the Adelphia House was bought by Philadelphia Management Corporation (PMC), one of Center City's top developers. The good news: the dilapidated old building would get major renovations. The bad news: PMC also tried to evict In Community. Project H.O.M.E. filed a law suit, arguing that PMC was discriminating against our resi-

dents on the basis of their disabilities. PMC eventually settled with Project H.O.M.E., agreeing to let In Community stay, but by then, a number of residents had moved out and Project H.O.M.E. had lost all but 13 of its apartments. Those who stayed benefited from their new digs. Long-term resident Tracy Young remembers finally getting a kitchen sink, a closet and a full-sized refrigerator.

Currently, In Community has 32 apartments (out of about 300 units in the building). We enjoy a good working relationship with Philadelphia Management Corporation, which still operates the Adelphia House.

In addition to their apartments, In Community residents have 24-hour access to a community room where they can make use of a computer, musical instruments, exercise equipment, a stereo, TV/DVD player, and numerous books, movies, and games. In Community is also host to a number of resident-run groups, like our Mental Health Recovery group, art group, and music group.

Although staff support is available on weekdays, In Community residents live independently, caring for their own day-to-day needs, managing without staff at night and on the weekends. Many In Community residents work and/or attend school. One resident has lived at In Community for 13 years. Many residents form close bonds and operate as an extended family, celebrating holidays together and supporting each other in all sorts of ways.

Jeannine Lopez, who served as In Community's Program Coordinator in the late 1990's, says, “The beauty of In Community is that our residents are integrated into the community. They can have both support and independence.” Sounds like a good deal for any of us.



Residents of In Community jam together at a recent talent contest.

LOTS OF LOVE

Valentine's Day was full of love at Project H.O.M.E. **Bank of America** hosted a Valentine's Day party for 150 formerly homeless children and parents who live at our Rowan Homes. Daniel K. Fitzpatrick, President of Bank of America Pennsylvania, presented a \$50,000 check to help Project H.O.M.E. provide housing and services for homeless men, women, and families in Philadelphia. This tremendous gesture of support will enable us to provide almost 500 units of supportive housing and reach out to people still living on the streets.

PRESERVING HISTORY

In addition to building solutions to homelessness and poverty, Project H.O.M.E. is doing its part for historic preservation. **The Preservation Alliance for Greater Philadelphia** honored Project H.O.M.E. with a 2006 Grand Jury Award for our restoration of Kate's Place in Center City. The 12-story Renaissance Revival structure originally built in 1926 is an architectural gem which now provides



critically needed affordable housing. "This significant Philadelphia landmark has been preserved both mentally and spiritually," said Project H.O.M.E. co-founder and Chief Financial Officer Joan McConnon.

A FAIR ECONOMY

Project H.O.M.E.'s **2nd Annual Career Fair** will be held at the Honickman Learning Center Comcast Technology Labs on Thursday, May 11, from 1:00 to 6:00 p.m. This fair, which is part of our economic revitalization strategy for lower North Philadelphia neighborhoods, brings

together employers and job seekers. Last year, over 20 employers and over 140 job seekers were on hand – with the results that many persons found good quality jobs. Also featured this year will be workshops on higher education and continuing adult education. For more information, call 215-235-2900.

RECOVERY AND RENOVATION

Our **St. Elizabeth's Residence** is about to have an extreme makeover. St. Elizabeth's is a specialized recovery residence for men housed in a former convent. Originally opened in 1993, it is slated for major renovation starting this summer. Helping to make the renovation possible is a generous grant of \$660,000 in PennHOMES money, funded through the **Pennsylvania Housing Finance Agency**. Other supporters of the St. E's renovation include the **Veterans Administration**. We are tremendously grateful to these institutions, who enable us to provide quality supportive housing for persons in recovery.



Dwelling Place
Page 3

FOREVER CHANGED By Martin Malloy

privilege of working with people on employment, volunteering, and adult education. However, this past December, I also began working at the Grace Café. Because of my time there, I am changed forever.

Grace Café is an overnight "coffeehouse" which Project H.O.M.E. operates in partnership with Arch Street United Methodist Church in Center City. Its purpose is to provide a safe space for persons on the street who are unwilling or unable to go to shelter. It's a place where they can at least come in out of the cold. The Grace Café offers coffee, tea, warmth, and compassion – not to mention offering a great big dose of understanding and humanity.

Most of my work at Project H.O.M.E. has me relating to persons who were once on the street, but who now are buoyed up by strong support systems, making healthy choices, taking initiative, and making remarkable progress in their lives. The Grace Café has brought me face to face with the raw reality of street homelessness. Each night I encountered persons with lives in chaos, who lacked any

I AM PASSIONATE

about my work and Project H.O.M.E. I normally work in Project H.O.M.E.'s Occupational Services department, where I have the

semblance of a support system or resources to help them.

I have been changed by the amazing people I have met at the Café — the handshakes, names, and conversations with hundreds of men and women. I have also been changed by the painful reality of the need to find other options for people because we are full. This has forced me to a heart-wrenching understanding of the scarcity of resources to meet the needs.

Rick Sieber, one of the supervisors for the Café, talked to me about the slow burn. In each employee, volunteer, and reader of this newsletter there is a fire – a fire to change things in the city, a fire to battle the causes of homelessness and poverty. The slow burn is the careful stoking of that fire over time, never allowing it to overwhelm you, lest you burn out. My own fire has been deeply kindled at Grace Café. I have a greater understanding of the issues surrounding homelessness and poverty. My empathy has deepened for those who experience the agony of homelessness. I see with greater clarity the desperate need for more resources in this city. In my frustration, I have come to a greater appreciation for all those who have struggled for years to build programs like Project H.O.M.E. Tremendous work has been done, but so much more is needed.

I will carry the memory of my experiences at the Grace Café to stoke the slow burning fire that must carry those of us through these trying times.

JAMES WEBSTER:



BACK ON TRACK

SEVERAL YEARS AGO, I was at the top of the art world. I was dining with the mayor and the governor, and my works were being shown around the world. The downside of my life back then was that I attended four to five parties and receptions per week, which fueled an already existing addiction to alcohol and other drugs, which were free and plentiful at these parties.

This went on for about 15 years, and I ended up losing three art studios, my marriage, and the home that I owned.

I was homeless and squatting the house I had lost to foreclosure. I was also suffering from physical and mental health issues. I ended up in the hospital. I resisted going to rehab because I didn't think that I had a problem with addiction, because I'd never been in any program, and because I had been so "successful" for 38 years. But, given a choice between rehab or a shelter, I chose to go into rehab.

The rehab referred me to Project H.O.M.E.'s St. Elizabeth Recovery Residence. I came to St. E's with reservations and lousy expectations based on the horror stories I associated with homeless shelters. However, when I got there, I found it to be the exact opposite of my fears. The staff was compassionate, and the residents were ordinary people just like me.

On my second day, I assumed the responsibility of being the House Cook, and after 30 days I was elected House Representative. I began to get involved in the larger Project H.O.M.E. community.

After I completed the year-long program at St E.'s and graduated, I decided that I wanted to stay within the Project H.O.M.E. community. I moved to permanent housing at Hope Haven I, where I now reside. Once again the staff has exceeded my expectations. Whatever you are paying my case manager Adrien, it is not enough.

I became involved with Project H.O.M.E.'s art programs. For several months I have been the volunteer art instructor at three Project H.O.M.E. sites, and recently was offered and accepted the paid position of Arts Coordinator.

I am also involved with the organizational structures that Project H.O.M.E. has created to remain accountable to the people it serves: I am on a Strategic Plan committee to review the Mission Statement, I am involved with the Advocacy Committee, and I am on the Resident Advisory Board.

I would like to thank the staff and founders of Project H.O.M.E. for helping me to put my life back on track.

James Webster, Jr., was born in Atlantic City in 1950, and has lived in Philadelphia most of his life. He is a self-taught artist who has been creating art since 1982. His work has been featured in over 60 art shows. He became a part of the Project H.O.M.E. community in 2004.



REMEMBERING WHY WE ARE HERE

By Jerry Davls

AS I WATCHED IN 1985, the then *McNeil-Lehrer Report* from my home in Chicago, I was so impressed with what I saw that I called Philadelphia to talk with Sister Mary Scullion. I had just seen Sister administering to the needs of people on the streets as they bravely fought the elements on what had to be one of the coldest nights of the year.

Sister Mary didn't talk down to those she encountered but lovingly engaged them as brothers and sisters. She made no distinctions; she embraced their humanity. What I witnessed was compassion, love, and giving people hope. Her message was clear: "We have not forgotten you; we have not abandoned you. You matter to me and you matter to many others who you have not seen and may not ever see."

As I was taught in parochial school, we are all "made to the image and likeness of God," and though we may lose sight of this from time to time, it is never lost on those around Project H.O.M.E. One person who helped me to be clear on why I am involved with Project H.O.M.E. was our late friend and sister, Georgianna B. Simmons.

Georgianna first met Sister Mary on the streets in the mid-1980s. She originally came into the Women of Hope residence, and eventually found permanent housing at Project H.O.M.E. She was a feisty and wonderful member of our community. Never one to be shy, she was always telling Sister Mary how

she should do things—and Sister Mary loved it. Georgianna went on her heavenly reward on October 17, 2002, and, fittingly, her homecoming celebration was held at Project H.O.M.E. headquarters October 24. Georgianna would pull you aside and talk about how she wanted her funeral to be – yes, her funeral. She would have loved it! And I think she did. But at the time it was taking place, she was probably getting the lay of the land and in all likelihood, in conference with God giving Him a few thoughts on how she believes things ought to be up there. Georgianna was, I suspect, not about to change with the change to her celestial venue.

Georgianna was one of our best Ambassadors ever. She helped us all to remember why we were there, and she made us smile. You could not take yourself too seriously around Georgianna.

The folks at Project H.O.M.E. understand that we don't travel this journey alone, and the greatest earthly gift that we have is the love for another one. I am reminded of this on each visit.

Jerry Davls serves on the Project H.O.M.E. Board of Trustees. He is the Manager of Media & Public Relations for Sunoco, Inc.

"What I witnessed was compassion, love, and giving people hope."

ADVOCACY UPDATE: WORKING TOGETHER FOR A MORE JUST SOCIETY

GAMBLING FOR JUSTICE

LAST OCTOBER, Project H.O.M.E. hosted a public forum on the social impact of the imminent gambling industry that is coming to the Philadelphia region. Since that forum, we have helped to spearhead the formation of a new broad-based coalition, The FAIR Deal (Fair and Accountable Investment of Revenues). The purpose of the coalition is to advocate for a portion of gambling revenue from local, county, state and private sources to fund initiatives that increase economic opportunity for low-income residents and communities. Research shows that previous instances of gambling industry promises of economic benefits have fallen far short of meeting the needs of low-income residents and communities. Since the gaming industry will bring in hundreds of millions of dollars annually to the city and region, we believe that it should benefit even the poorest community with housing and jobs. We will also advocate to ensure that adequate resources are put toward treatment and programs for gambling addicts and for education about problem gambling. *For more information, contact Will O'Brien, Special Projects Coordinator, at 215-232-7272, ext. 3047, or willobrien@projecthome.org.*

STEPS FOR HOUSING SERVICES

WE ARE PLEASED to announce that Senator Arlen Specter recently signed on to the Services for Ending Long-Term Homelessness Act, a bill to establish a federal grant program that will provide supportive services in permanent supportive housing for chronically homeless individuals. Please thank his office by calling 202-224-4254.

We are in touch with Senator Santorum's office, and he is considering signing on. Please call 202-224-6324 and ask for his support.

VICTORY FOR VOTING RIGHTS,...

AFTER MONTHS OF work by Project H.O.M.E. and allies in the Protect Our Vote Campaign, we are thrilled to announce that Governor Rendell vetoed House Bill 1318, a punitive bill that would have required all voters to show identification at every election. Before its defeat, coalition members helped beat back provisions that would disenfranchise ex-felons and limit the number of places that could be used as polling sites.

Special thanks to the supporters that came to events, called their representatives, or got on a bus to Harrisburg. Your efforts have paid off!



...AND GETTING OUT THE VOTE

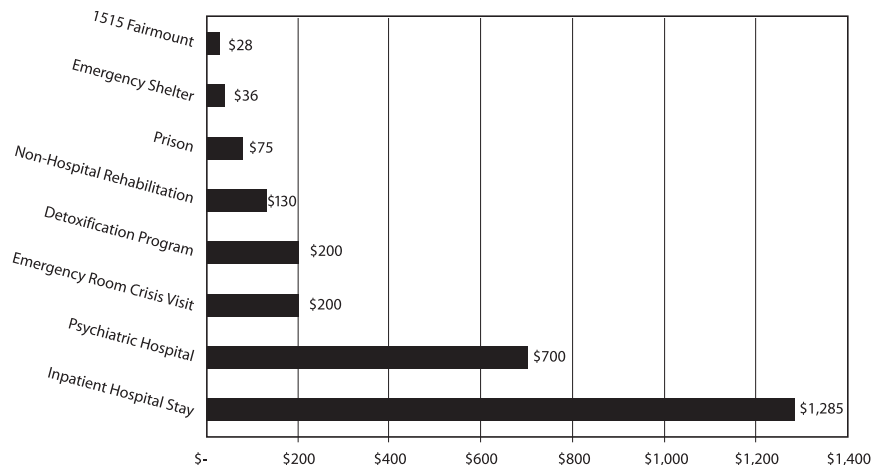
VOTE FOR HOMES!, a non-partisan coalition facilitated by Project H.O.M.E., is getting organized for Election 2006. We will be registering and mobilizing thousands of homeless and low-income voters. We also will create public dialogue about the issues of housing, jobs, and services with the candidates for U.S. Senator and Governor of Pennsylvania. As in previous years, we will be publishing voters guides and hosting candidates forums. Since 1999, we've registered 8,500 voters, and we need your help to have an impact this year. *For more information, call Jennine Miller, Coordinator of Advocacy at 215-232-7272, ext. 3042, or jmiller@projecthome.org.*



BY THE NUMBERS

Permanent housing is not only humane and just, it's also a bargain.

We have been analyzing the various costs of different services utilized by persons who are homeless on the streets. The result: permanent supportive housing, such as we provide at 1515 Fairmount Avenue, is the least expensive and most cost-efficient.



Daily Cost in Philadelphia

2003 data compiled from Delaware Valley Healthcare Council, Philadelphia Office of Emergency Shelter and Services, Philadelphia Prison System Commissioner's Office, and Project H.O.M.E.



PHENOMENAL FRIENDS



Who: Pat Taylor

Volunteer since: 1989

Volunteer Position: St. Columba's Wednesday dinner cook, holiday helper

On any Wednesday afternoon, you can find Ms. Pat working hard to prepare dinner for the men of Saint Columba's with her usual smile on her face. Since retiring from a retail job, which she loved enough to commute to New York every day, Ms. Pat has dedicated her free time to helping others.

Ms. Pat has been connected with the Project H.O.M.E. community since our early years. In support of her daughter, Chris Whaley, a long-time staff member, Ms. Pat attended many Project H.O.M.E. events, including ground-breakings of new residences or political demonstrations related to the struggles of homeless people. She enjoyed being in the audience to cheer everyone on!

Ms. Pat began assisting with food distribution at our Community Center on Diamond Street. Over the years, she has packed countless baskets for people who need them in the Saint Elizabeth's neighborhood and helped sort toys for the children in the After School Programs of Project H.O.M.E.

Ms. Pat often brings food with her to supplement the Wednesday night dinner at Saint Columba's. This is especially helpful since food budgets are tight. She also concentrates on maintaining high food safety standards. The residents appreciate her cooking, and former homeless men whom she has served make it a point to say hello if they see Ms. Pat around town. Ms. Pat appreciates successes both big and small, so these small exchanges are a cause for her to celebrate.

For her dedication, compassion, and generosity, we recognize Ms. Pat with grateful hearts.

A BLOSSOMING OF GENEROSITY

Many, many thanks to the following groups and individuals for their generous contributions to Project H.O.M.E. this winter and spring. Their wonderful gifts allow us to continue implementing innovative solutions to the crises of homelessness and poverty.

Acme Markets ♦ AEGON Direct Marketing Services ♦ Gary and Kathy Anderson ♦ The Annie E. Casey Foundation ♦ Avery Foundation ♦ Bank of America ♦ The Barra Foundation ♦ Donna and Jon Boscia ♦ Joe and Joann Canavan ♦ Barbara A. Capozzi, Esq. ♦ Claneil Foundation ♦ CMQ Floor Covering ♦ Comcast Foundation ♦ Commonwealth of PA - Department of Education ♦ Commonwealth of Pennsylvania ♦ John and Sheila Connors ♦ Mr. and Mrs. Robert Fox ♦ Furniture Lady ♦ Dr. Eugene Garfield ♦ John and Chara Haas ♦ Hamilton Family Foundation ♦ Tony and Lynn Hirschler ♦ The Honickman Foundation ♦ Independence Blue Cross ♦ Charles and Barbara Kahn ♦ Dr. Deborah Anna Luepnitz ♦ The Maneely Fund ♦ Maverick Capital Foundation ♦ Susan and Thomas McGrath ♦ McLean Contributionship ♦ The Lily Foundation ♦ Merle Vogt Foundation ♦ MKM Foundation ♦ John and Joyce Moran ♦ The Morris Charitable Trust ♦ Oak Philanthropy (UK) Limited ♦ Mr. and Mrs. J. Patrick O'Grady ♦ Mr. and Mrs. Michael O'Neill ♦ The Patricia Kind Family Foundation ♦ Paul E. Kelly Foundation ♦ PECO Energy Company ♦ The Pew Charitable Trusts ♦ The Philadelphia Foundation ♦ Mr. and Mrs. David Pincus ♦ PNC Bank ♦ Public/Private Ventures ♦ Mr. and Mrs. Charles G. Roach, Jr. ♦ Anne and Bruce Robinson ♦ Samuel S. Fels Fund ♦ James and Marie Seward ♦ Sherrerd Charitable Trust ♦ Sisters of Mercy - Merion ♦ Mr. and Mrs. Harold A. Sorgenti ♦ St. Peter and Paul Rectory ♦ Mr. David Zambelli and Mr. Henry Tawyea ♦ Mr. David V. N. Taylor ♦ Cranaleith Foundation ♦ United Way of Southeastern PA ♦ Veritable, LP ♦ The W. W. Smith Charitable Trust ♦ John and Christina Webber ♦ Wilt Chamberlain Memorial Fund ♦ Mr. and Mrs. Robert F. Woods

On behalf of the entire Project H.O.M.E. community, we extend our heartfelt gratitude for the support of our Irish friends this St. Patrick's Day:

Thanks to **Tom Muldoon** and the **Philadelphia Convention & Visitors Bureau, David Marshall of Amerimar Realty Company, Marie Baker Brown, the Rittenhouse Hotel** and **Boathouse Row Bar** for their tremendously successful 25th Anniversary **Muldoon's Saloon** fundraising event, benefiting Project H.O.M.E.

Special thanks to **Jim and Anne Gallagher** for hosting their annual St. Patrick's Day Dinner, benefiting Project H.O.M.E.

OUR WISH LIST

- Cleaning supplies: sponges, laundry detergent, dish soap, and disinfectants
- Bottled water
- SEPTA tokens
- New twin bed sheet sets, blankets, comforters, and pillows
- New underwear and socks for adults
- New washcloths and towels
- Toiletries: deodorant, shaving cream, and razors

For health reasons, Project H.O.M.E. cannot accept used linens, toys, or dishes. Please contact Catherine Darin, Development Officer, at 215-232-7272, ext. 3021 or catherinedarin@projecthome.org to donate items.



NEVER ENDING STORY

By Lasheld Myers

Times were hard and things were all in dismay
Until after my illness and homelessness had come into play,
Then a glimpse, a spark, came my way;
walking down the street one day.

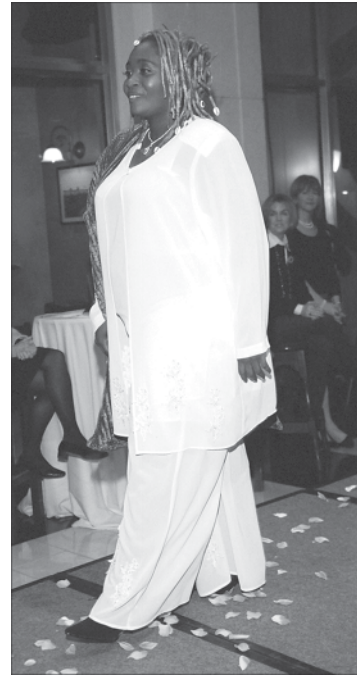
I walked into Rowan Homes and said hello, how can I apply;
A woman said hello and asked me why
I laughed and said I am homeless could I apply?
The woman said yes— I don't remember the date;
I just knew that I had to wait.

August 29th – on my birthday - the phone rang
and put a smile on my face
and the voice on the other end said you can come pick a place.

I sat my children down— all four, and said we now have a home.
And we won't be living with these other folk but happily alone.

My oldest son said hurray I am so happy,
Where, where will we stay? I said not too far away—
on Judson Street in a place called Rowan Homes
A place that now we can call our own.

Now I felt like I could regain my dignity—
bring out who I was all along
I had been without a home, a job, an income for so long.
Education, homeownership, employment,
I went on a mission and I applied for a position.
Now if you walk into Project H.O.M.E.'s Learning Center,
you will see the biggest smile and informing of opportunities
is no one other than me!



Lasheild Myers, a resident of Project H.O.M.E.'s Rowan Homes, read this poem at the March 7 "Women Empowering Women" event hosted by the Phoenix Salon and Spa and the Keating Group. Thanks to our hosts and sponsors for an unforgettable evening of fashion, food, and honored guests that celebrated real women, real struggles, real triumphs, and real beauty, and which benefited Project H.O.M.E. Thank you to all of the incredible women involved—it was truly a spectacular evening!



This Mother's Day, honor someone you care about with a gift to Project H.O.M.E.

For more information about this creative opportunity to honor a special woman in your life, call Callie Lytton, Development Associate and Donor Liaison, at 215-232-7272, ext. 3045 or visit www.projecthome.org.

Join Project H.O.M.E. for the 19th Annual Irish Pub Tour de Shore Bike Ride July 22, 2006

From: Irish Pub, 2007 Walnut Street, Philadelphia
To: Irish Pub, St. James & Boardwalk, Atlantic City
What: A 65-mile bike tour of scenic South Jersey starting in Center City Philadelphia and ending in Atlantic City. Proceeds benefit the K-6 Educational Programs at Project H.O.M.E.'s Honickman Learning Center and Comcast Technology Labs. The ride ends with an outdoor patio party with food, drink, music, and prizes. Return transportation for bike and rider will be available.

For information contact Catherine Darin at 215-232-7272, ext. 3021, or catherinedarin@projecthome.org. Or visit our website, www.projecthome.org, and look for the Tour de Shore link!

Businesses with a Mission

These businesses, located at 1515 Fairmount Avenue, provide employment and job training for formerly homeless men and women.

BACK HOME CAFÉ AND CATERING

A DELICIOUS JOB INITIATIVE

For more information on the café or catering, email cateringmanager@projecthome.org or call 215-232-6311.

Hours: M – F, 8:30 am – 2:30 pm

OUR DAILY THREADS THRIFT SHOP

A FASHIONABLE JOB INITIATIVE

Call 215-232-6322 to make a donation appointment or get emails about upcoming sales!

Hours: M – F, 9:00 am – 5:00 pm

“I slept and I dreamed that life is all joy. I woke and I saw that life is all service. I served and I saw that service is joy. “

— Rabindranath Tagore

A copy of the official registration and financial information may be obtained from the Pennsylvania Department of State by calling toll-free, within Pennsylvania, (800) 732-0999. Registration does not imply endorsement.



PROJECT H.O.M.E.

1515 Fairmount Avenue
Philadelphia, PA 19130

Project H.O.M.E. invites you to

MAKING OUR WAY HOME Solving the Affordable Housing Crisis in Philadelphia

**Thursday, April 20 - 7:00 p.m.
Kate's Place - 1929 Sansom Street**

Despite the astonishing boom in real estate, Philadelphia faces a severe crisis in affordable housing. While high-end condominiums go up, tens of thousands of low- and moderate-income Philadelphians struggle to find a decent place to live at a manageable cost.

Solutions are possible. Members of the Philadelphia Affordable Housing Coalition, ACORN and an emerging alliance of groups are launching a campaign to win **“Inclusionary Zoning”** for Philadelphia. Inclusionary Zoning would require luxury housing developers to pay their fair share by contributing to an affordable housing fund or including affordable units in their developments and ensuring living wage jobs in their buildings. We will learn about how inclusionary zoning has succeeded in other cities and how we can make it work in Philadelphia. Come and learn how ordinary citizens can play a role in helping to ensure there is decent, affordable housing for all.

Space is limited – Please RSVP to Will O’Brien, Special Projects Coordinator, at 215-232-7272, ext. 3047 or willobrien@projecthome.org.

NONPROFIT ORG.
US POSTAGE
PAID
PHILADELPHIA, PA
PERMIT No. 01219

A HOME FOR EVERYONE:
What can we do to solve the
affordable housing crisis in
Philadelphia?
– see page 1